

**Marine Engine Drive-line Applications ©**

**"YC4D High-Speed Craft Engine" "YC4F High-Speed Craft Engine" "YC6A High-Speed Craft Engine", "YC6L-High-Speed Craft engine", "YC6MJ High-Speed Craft Engine" and the "YC6MK- High-Speed Craft Engine"**

**ASSESSCO GENERAL & MARINE**

**Marine Engine Drive-line Applications / Oceania**

**TIMOTHY H. SMITHSON**

63 MAHANA ROAD

TE RAPA

HAMILTON

NEW ZEALAND

PH 0064 7 855 4886

Mobile 027 288 6481

[www.assessco.co.nz](http://www.assessco.co.nz)

[assessco.forensic@gmail.com](mailto:assessco.forensic@gmail.com)

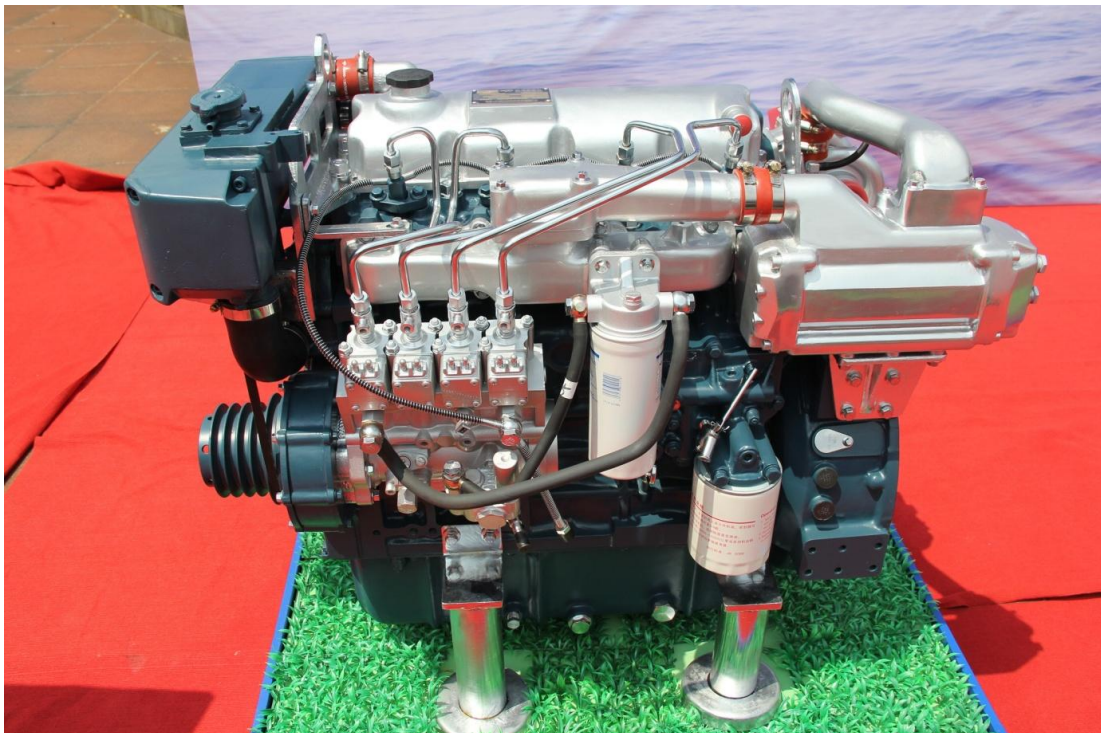
1 November 2013 / 131101

Our Ref: - File AGM-131016

\*\*\*\*\*

\*\*\*\*\*

**YC4D Marine Diesel Engine**



\*\*\*\*\*

© ASSESSCO GENERAL & MARINE

Private Box 63, Mahana Road, Te Rapa, Hamilton New Zealand

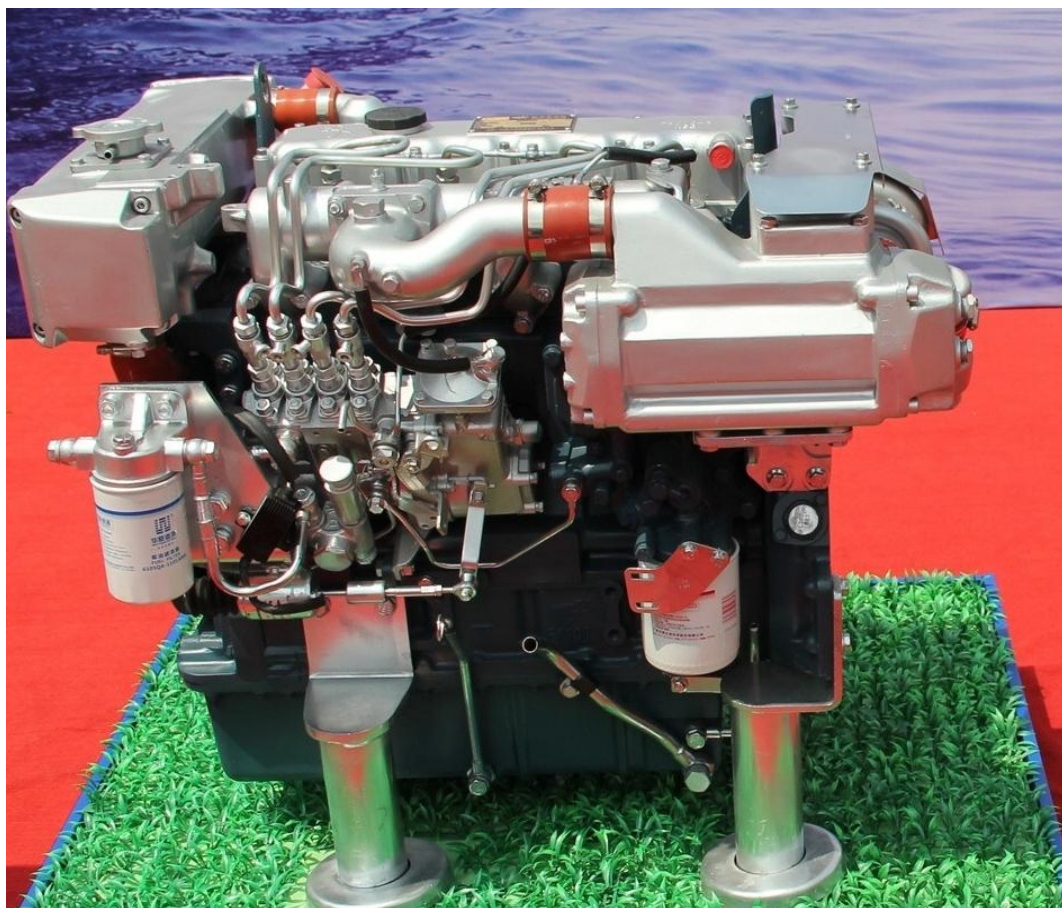
## **Marine Engine Drive-line Applications ©**

**"YC4D High-Speed Craft Engine" "YC4F High-Speed Craft Engine" "YC6A High-Speed Craft Engine", "YC6L-High-Speed Craft engine", "YC6MJ High-Speed Craft Engine" and the "YC6MK- High-Speed Craft Engine"**

Model	YC4D140L-C30
Continuous power, speed	103 kW (140 mhp), 2800 rpm
Type	4 cylinders, vertical in-line water cooled four-stroke direct-injection diesel
bore * stroke	108 mm * 115mm
Induction	Turbocharging with inter-cooling
Displacement	4.21 litres
Compression ratio	17.5:1
Min. specific fuel consumption	≤ 200 g/(kW.h)
Specific oil consumption	≤ 1.5 g/(kW.h)
Rotation direction	counter clockwise
Starting	Electric motor
Net mass	390 kg
Overall dimensions	1078 mm length * 614 mm width * 808 mm height
Matching reduction gearbox	MV100A/
Emissions Standard	IMO T2

2

## **YC4F Marine Diesel Engine**





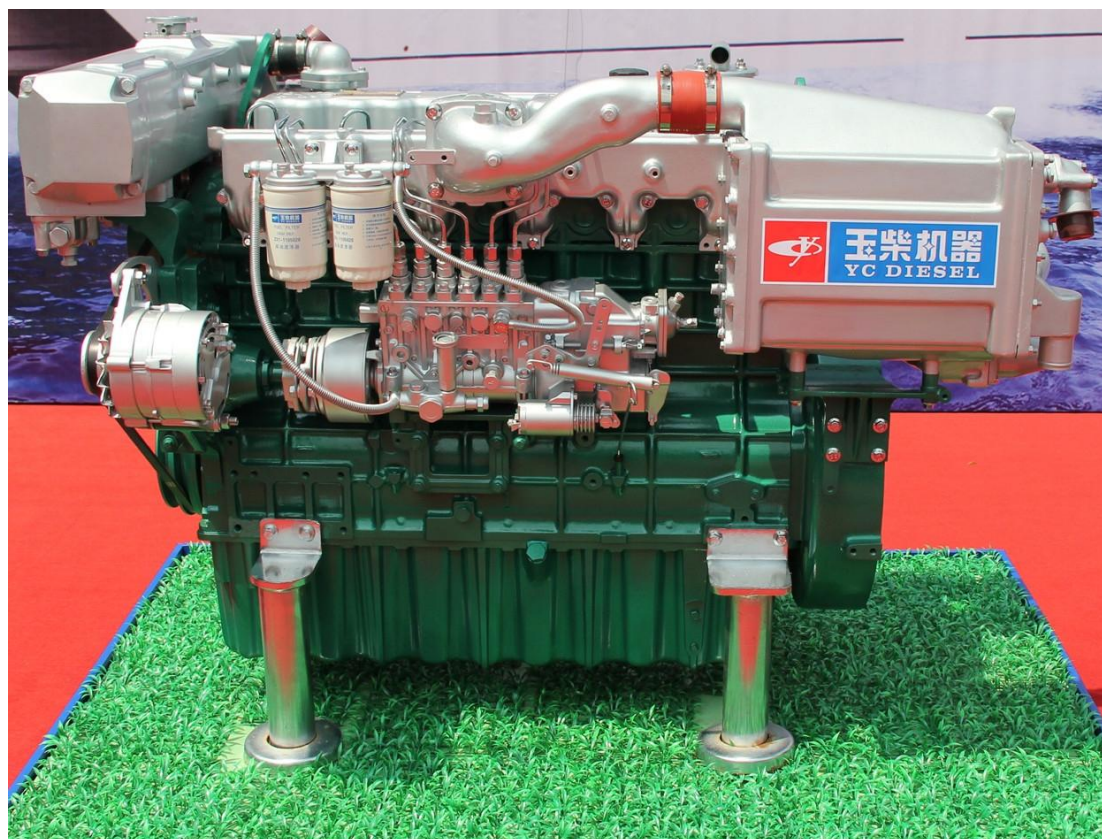
## **Marine Engine Drive-line Applications ©**

**"YC4D High-Speed Craft Engine" "YC4F High-Speed Craft Engine" "YC6A High-Speed Craft Engine", "YC6L-High-Speed Craft engine", "YC6MJ High-Speed Craft Engine" and the "YC6MK- High-Speed Craft Engine"**

\*\*\*\*\*

Model	YC4F120L-C20	YC4F110L-C20	YC4F95L-C20
Continuous power, speed	90 kW (120 mhp), 3200 rpm	80 kW (110 mhp), 3000 rpm	70 kW (95 mhp), 2800 rpm
Type	4 cylinders, vertical in-line water cooled four-stroke direct-injection diesel		
bore * stroke	92 mm * 100 mm		
Induction	Turbocharging with inter-cooling		
Displacement	2.66 litres		
Compression ratio	16.3:1		
Min. specific fuel consumption	≤ 195 g/(kW.h)		
Specific oil consumption	≤ 0.8 g/(kW.h)		
Rotation direction	counter clockwise		
Starting	Electric motor		
Net mass	370 kg		
Overall dimensions	866 mm length * 623 mm width * 738 mm height		
Matching reduction gearbox	HC038A/		
Emissions Standard	IMO T2		

## **YC6A Marine Diesel Engine**



## **Marine Engine Drive-line Applications ©**

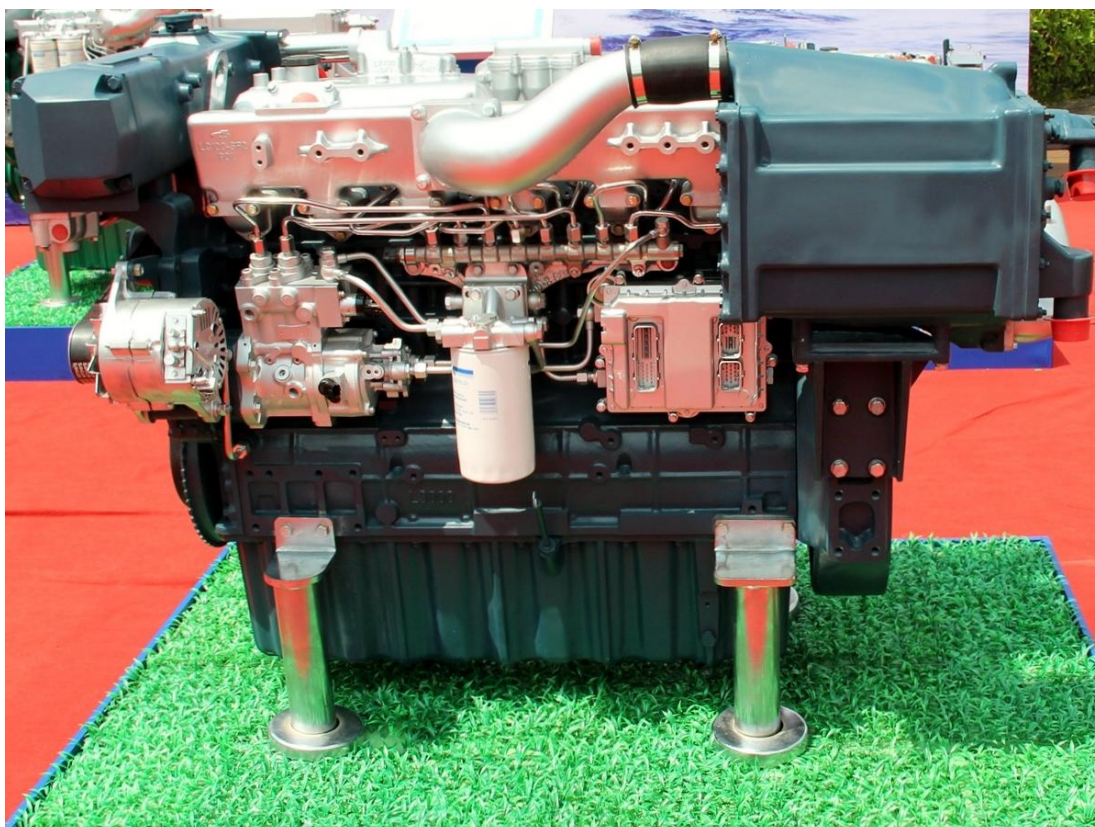
**"YC4D High-Speed Craft Engine" "YC4F High-Speed Craft Engine" "YC6A High-Speed Craft Engine", "YC6L-High-Speed Craft engine", "YC6MJ High-Speed Craft Engine" and the "YC6MK- High-Speed Craft Engine"**

Model	YC6A310L-C20	YC6A340L-C20
Continuous power, speed	227 kW (310 mhp), 2600 rpm	250 kW (340 mhp), 2600 rpm
Type	6 cylinders, vertical in-line water cooled four-stroke direct-injection diesel	
bore * stroke	108 mm * 132 mm	
Induction	Turbocharging with inter-cooling	
Displacement	7.26 litres	
Compression ratio	17:1	
Min. specific fuel consumption	≤ 189 g/(kW.h)	
Specific oil consumption	≤ 1.5 g/(kW.h)	
Rotation direction	counter clockwise	
Starting	Electric motor	
Net mass	780 kg	
Overall dimensions	1510 mm length * 812 mm width * 975 mm height	
Matching reduction gearbox	HCQ138/HCA138/	
Emissions Standard	IMO T2	

## **YC6L Marine Diesel Engine**

**ECMS / Electronic computer management system**

\*\*\*\*\*





## **Marine Engine Drive-line Applications ©**

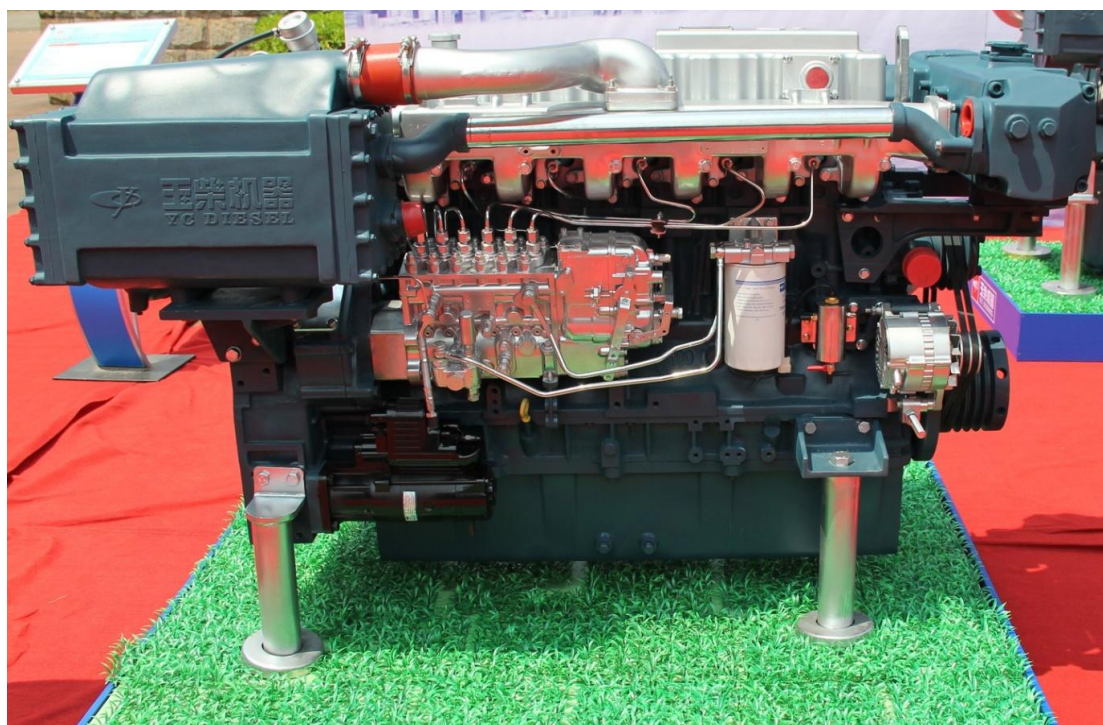
**"YC4D High-Speed Craft Engine" "YC4F High-Speed Craft Engine" "YC6A High-Speed Craft Engine", "YC6L-High-Speed Craft engine", "YC6MJ High-Speed Craft Engine" and the "YC6MK- High-Speed Craft Engine"**

Model	YC6L350L-C20
Continuous power, speed	258 kW (350 mhp), 2200 rpm
Type	6 cylinders, vertical in-line water cooled four-stroke direct-injection diesel
bore * stroke	113 mm * 140 mm
Induction	Turbocharging with inter-cooling
Displacement	8.42 litres
Compression ratio	17.5:1
Min. specific fuel consumption	≤ 190 g/(kW.h)
Specific oil consumption	≤ 1.5 g/(kW.h)
Rotation direction	counter clockwise
Starting	Electric motor
Net mass	800 kg
Overall dimensions	1504 mm length * 850 mm width * 997 mm height
Matching reduction gearbox	HCQ138/
Emissions Standard	IMO T2

## **YC6MJ Marine Diesel Engine**

\*\*\*\*\*

\*\*\*\*\*



\*\*\*\*\*

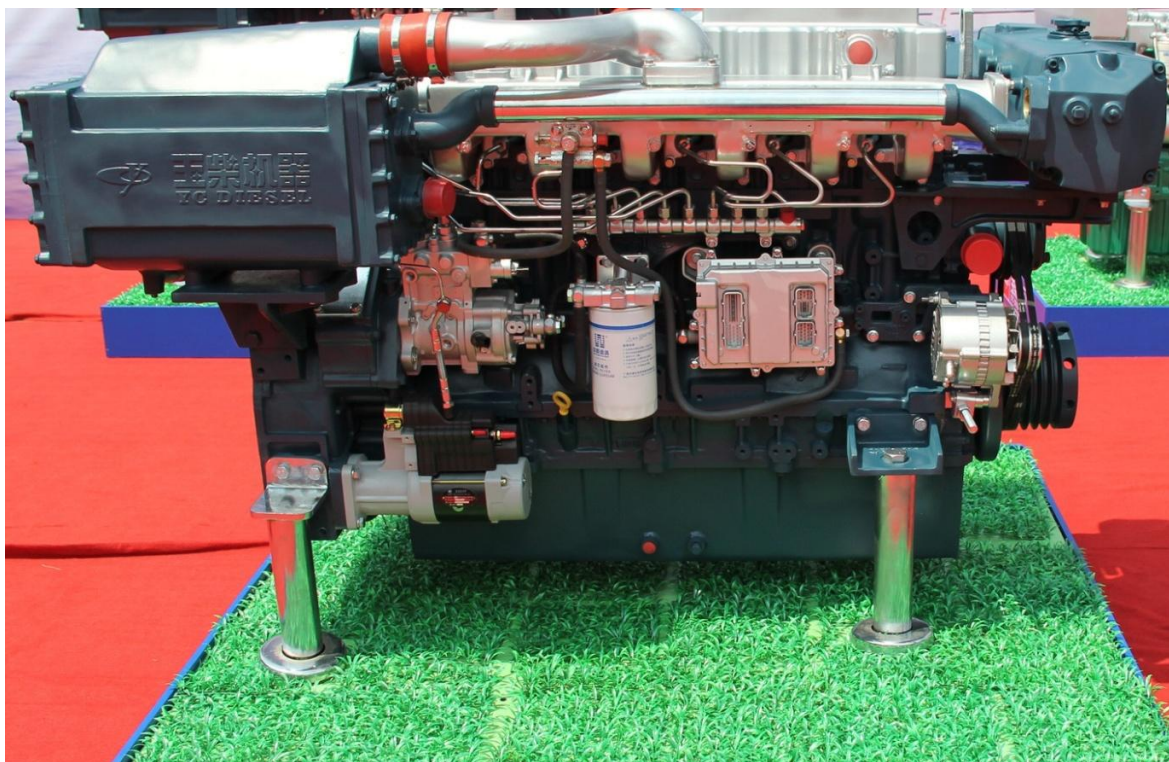
## **Marine Engine Drive-line Applications ©**

**"YC4D High-Speed Craft Engine" "YC4F High-Speed Craft Engine" "YC6A High-Speed Craft Engine", "YC6L-High-Speed Craft engine", "YC6MJ High-Speed Craft Engine" and the "YC6MK- High-Speed Craft Engine"**

Model	YC6MJ500L-C20
Continuous power, speed	368 kW (500 hp), 2000 rpm
Type	6 cylinders, vertical in-line water cooled four-stroke direct-injection diesel
bore * stroke	131 mm * 145 mm
Induction	Turbocharging with inter-cooling
Displacement	11.73 litres
Compression ratio	17.5:1
Min. specific fuel consumption	≤ 192 g/(kW.h)
Specific oil consumption	≤ 1.5 g/(kW.h)
Rotation direction	counter clockwise
Starting	Electric motor
Net mass	1030 kg
Overall dimensions	1703 mm length * 890 mm width * 1019 mm height
Matching reduction gearbox	HCQ300/
Emissions Standard	IMO T2

## **YC6MK Marine Diesel Engine**

**ECMS / Electronic computer management system**



\*\*\*\*\*

## Marine Engine Drive-line Applications ©

"YC4D High-Speed Craft Engine" "YC4F High-Speed Craft Engine" "YC6A High-Speed Craft Engine", "YC6L-High-Speed Craft engine", "YC6MJ High-Speed Craft Engine" and the "YC6MK- High-Speed Craft Engine"

Model	YC6MK385L-C20
Continuous power, speed	283 kW (385 hp), 2100 rpm
Type	6 cylinders, vertical in-line water cooled four-stroke direct-injection diesel
bore * stroke	123 mm * 145 mm
Induction	Turbocharging with inter-cooling
Displacement	10.34 litres
Compression ratio	17:1
Min. specific fuel consumption	≤ 189 g/(kW.h)
Specific oil consumption	≤ 1.5 g/(kW.h)
Rotation direction	counter clockwise
Starting	Electric motor
Net mass	1000 kg
Overall dimensions	1703 mm length * 890 mm width * 1019 mm height
Matching reduction gearbox	HC200/HC201/
Emissions Standard	IMO T2

### GLOBAL WARRANTY 24M / 300H

- Product warranty covers a period of 24 months of normal operation or 300 hours, whichever occurs first. A vessel logbook is required to be completed covering the warranty period and thereafter. A comprehensive logbook enhances an engine's resale value.
- A comprehensive service schedule document is supplied with each drive-line product; engines are pre-run prior to delivery.
- Consumables are identified by the New Zealand product supplier within the service schedule document, and must be strictly adhered to or otherwise agreed to in writing by the product supplier on behalf of the manufacturer.
- Cleared funds are to be confirmed and made available subject to any offer / "Please Note Well" / all sales are subject to an "Estimate Disclosure Advice Document" as part of any offer. Customer's details required for delivery nationwide.
- All drive-line installations, as well as servicing and repairs, are required to be undertaken by an authorized professional marine engineer, details of that provider to be provided in writing at each period of application by the service provider.
- Warranty signoff of the product is completed in writing, when an appropriate level of sea trial testing has been completed to the product supplier's and/or agent's satisfaction.
- All warranty claims must be notified when the alleged claim arises, and further be applied in writing to the product supplier within 14 days. This is to ensure that all matters can be reviewed, analyzed and attended to within a reasonable time-frame, depending on where the incident or alleged claim arises.
- New marine engines are available for new installations and also for repowers. In the case of repowers, new engines can be supplied on an exchange basis.
- All offers and transactions are subject to AGM / Assessco General & Marine's standard **Terms and Conditions** which are supplied and are subject and part of any offer.

“Safe and pleasurable boating people” ©

